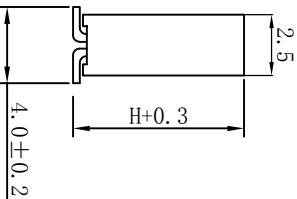


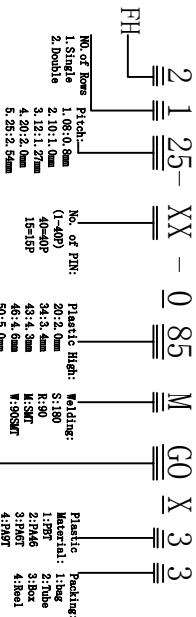
P.C.B LAYOUT



Position	1 Thru 40
Plastic Ht(0)	8.5 7.1 5.0

Specifications:
 Current Rating: 3 Amp
 Contact resistance: 20MΩ Max
 Insulator resistance: 1000MΩ Min.
 Withstanding Voltage: 500V AC
 Operating Temperature Range: -40° ~ +105° C
 Material And Finish
 Insulator: Polyester, (PBT UL94V-0)
 Insulator Color: Black
 Contact: Brass
 Contact Plated: See Contact Plated Tab.

Ordering information



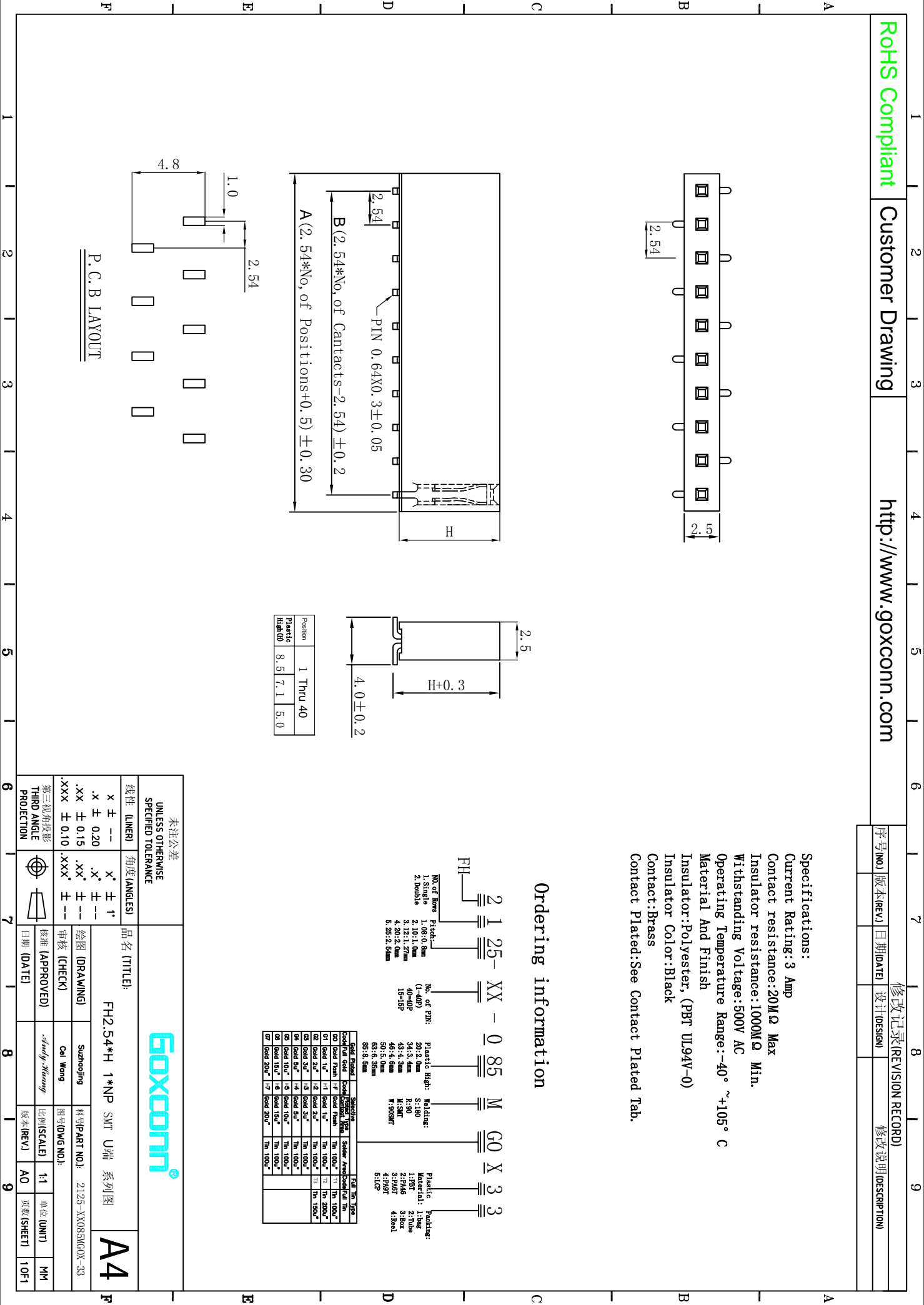
Code	Material	Plating	Finish
00	load 100"	Th 100"	Th 100"
01	load 10"	Th 100"	Th 200"
02	load 20"	Th 100"	Th 150"
03	load 30"	Th 100"	Th 100"
04	load 40"	Th 100"	Th 100"
05	load 50"	Th 100"	Th 100"
06	load 100"	Th 100"	Th 100"
07	load 200"	Th 100"	Th 100"

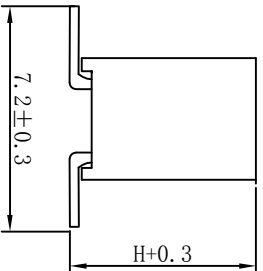
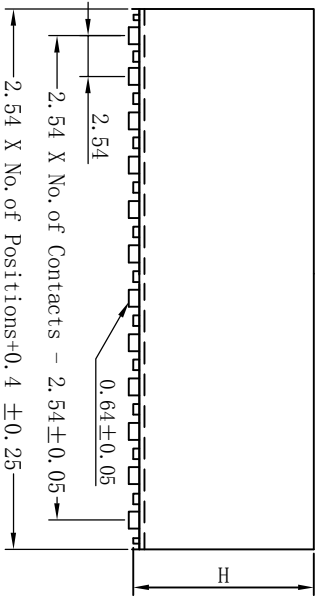
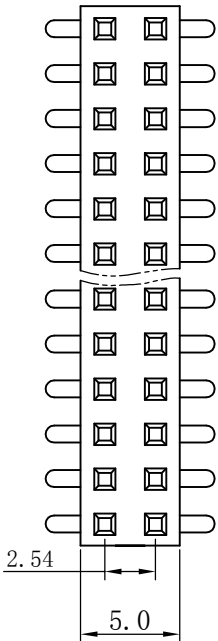


品名 (TITLE): FH2.54*H 1*NP SWT U端 系列图

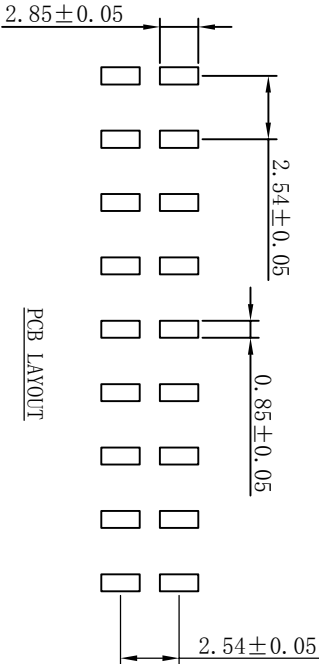
A4

未注公差 UNLESS OTHERWISE SPECIFIED TOLERANCE		线性 (LINER)		角度 (ANGLES)		第三视角投影 THIRD ANGLE PROJECTION	
x ± --	x' ± 1'	.x ± 0.20	.x' ± --	⊕	第三视角投影 THIRD ANGLE PROJECTION	审核 (CHECK)	日期 (DATE)
.xx ± 0.15	.xx' ± --	.xxx ± 0.10	.xxx' ± --	⊙	核准 (APPROVED)	日期 (DATE)	





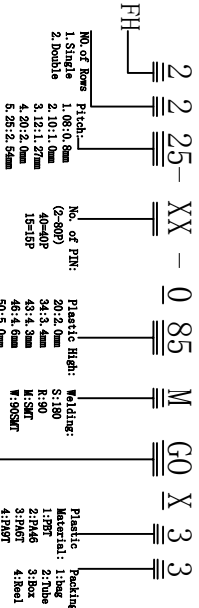
Position	2 Thru 80
Plastic Height	8.5, 7.1, 5.0



PCB LAYOUT

Specifications:
 Current Rating: 3 Amp
 Contact resistance: 20MΩ Max
 Insulator resistance: 1000MΩ Min.
 Withstanding Voltage: 500V AC
 Operating Temperature Range: -40° ~ +105° C
 Material And Finish
 Insulator: Polyester, (PBT UL94V-0)
 Insulator Color: Black
 Contact: Brass
 Contact Plated: See Contact Plated Tab.

Ordering information



Code	Material	Finish	Plating	Material	Finish
00	load 100"	100"	100"	100"	100"
01	load 10"	10"	10"	10"	10"
02	load 20"	20"	20"	20"	20"
03	load 30"	30"	30"	30"	30"
04	load 40"	40"	40"	40"	40"
05	load 50"	50"	50"	50"	50"
06	load 60"	60"	60"	60"	60"
07	load 70"	70"	70"	70"	70"
08	load 80"	80"	80"	80"	80"
09	load 90"	90"	90"	90"	90"
10	load 100"	100"	100"	100"	100"



品名 (TITLE): FH2.54*H 2*NP SMT U端 系列图 **A4**

线性 (LINER)	X ± --	角度 (ANGLES)	X° ± ± ± --	第三视角投影 THIRD ANGLE PROJECTION	第三视角投影 THIRD ANGLE PROJECTION
公差 (TOLERANCE)	.X ± 0.20		.X° ± ± ± --		
	.XX ± 0.15		.XX° ± ± ± --		
	.XXX ± 0.10		.XXX° ± ± ± --		
审核 (CHECK)	日期 (DATE)	批准 (APPROVED)	日期 (DATE)	审核 (CHECK)	日期 (DATE)
制图 (DRAWING)	日期 (DATE)	审核 (CHECK)	日期 (DATE)	制图 (DRAWING)	日期 (DATE)
料号 (PART NO.)	2225-XX085MCOX-33	料号 (PART NO.)	2225-XX085MCOX-33	料号 (PART NO.)	2225-XX085MCOX-33
衬号 (DRAWING)	衬号 (DRAWING)	衬号 (DRAWING)	衬号 (DRAWING)	衬号 (DRAWING)	衬号 (DRAWING)
单位 (UNIT)	MM	单位 (UNIT)	MM	单位 (UNIT)	MM
页码 (SHEET)	10F1	页码 (SHEET)	10F1	页码 (SHEET)	10F1