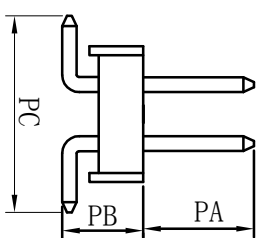
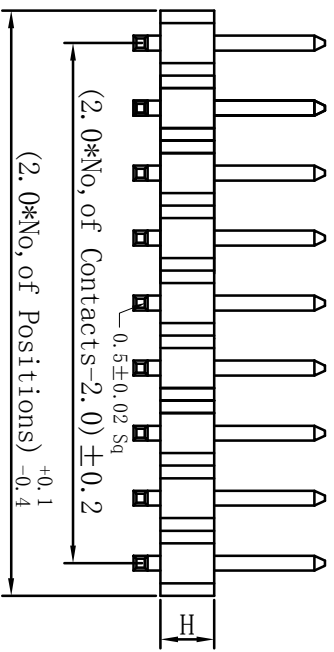
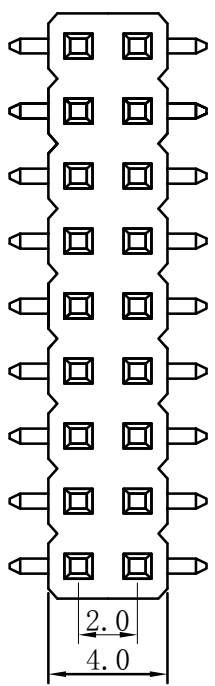
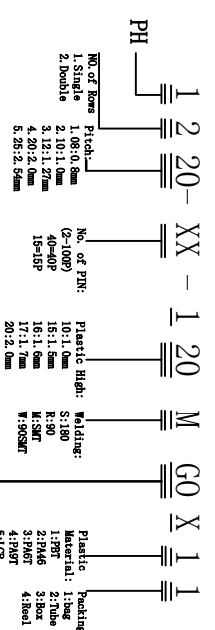


| 序号(No.) | 版本(Rev.) | 日期(DATE) | 修改记录 (REVISION RECORD) | 修改说明 (DESCRIPTION) |
|---------|----------|----------|------------------------|--------------------|
| | | | 设计 (DESIGN) | |

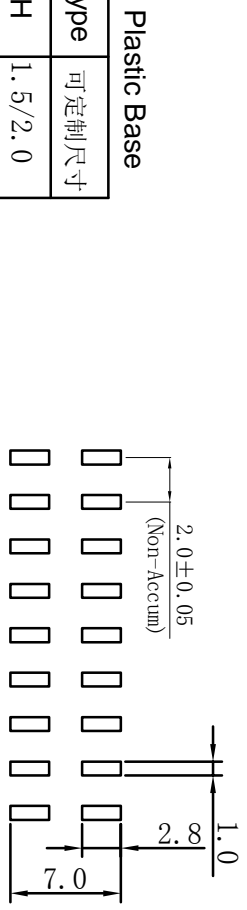


Specifications:
 Current Rating: 1.5 Amp
 Voltage Rating: 150V AC/DC
 Contact resistance: 20m Ohm Max
 Insulator resistance: 1000M ohm min.
 Withstanding Voltage: 500V AC/Minute
 Operating Temperature Range: -40° ~+105° C
 Material And Finish
 Insulator: Polyester (PBT UL94V-0)
 Insulator Color: Black
 Contact: Brass
 Contact Plated: See Contact Plated Tab.

Ordering information



| End Board | Board Thickness | Mounting Style | Order Description | Unit |
|-----------|-----------------|----------------|-------------------|-------|
| 00 | Board 1.6" | 1 | 1000" | 1000" |
| 01 | Board 1.6" | 1 | 1000" | 1000" |
| 02 | Board 3.0" | 2 | 1000" | 1000" |
| 03 | Board 3.0" | 2 | 1000" | 1000" |
| 04 | Board 3.0" | 2 | 1000" | 1000" |
| 05 | Board 3.0" | 2 | 1000" | 1000" |
| 06 | Board 3.0" | 2 | 1000" | 1000" |
| 07 | Board 3.0" | 2 | 1000" | 1000" |



Plastic Base

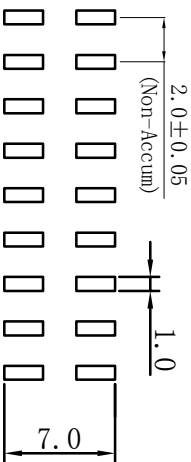
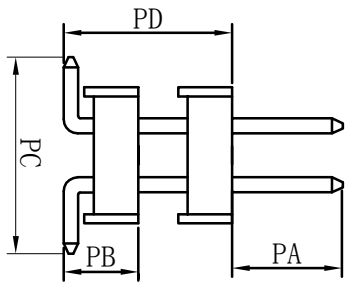
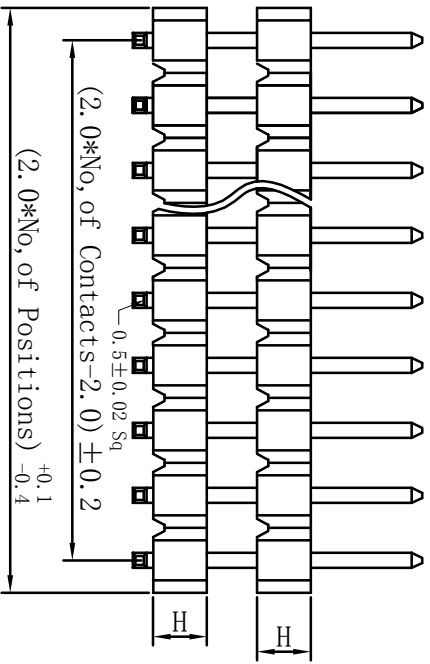
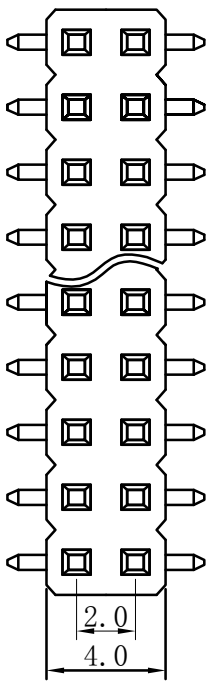
| Type | 可定制尺寸 |
|------|---------|
| H | 1.5/2.0 |
| PA | 4.0 |
| PB | 2.8 |
| PC | 6.0 |

PCB LAYOUT



A4

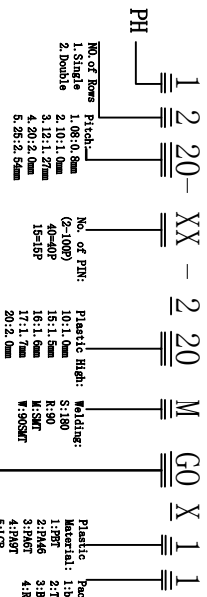
| 公差 | | 公差 | | 公差 | | 公差 | | 公差 | |
|-------------|-------------|--------------------------------------|--|------------------------|--|------------------------|--|------------------------|--|
| 线性 (LINER) | 角度 (ANGLES) | UNLESS OTHERWISE SPECIFIED TOLERANCE | | THIRD ANGLE PROJECTION | | THIRD ANGLE PROJECTION | | THIRD ANGLE PROJECTION | |
| X ± 0.20 | X' ± 1' | 品名 (TITLE): PH2.0 2*NP SMT 无柱 系列图 | | 图号 (DRAWING) | | 审核 (CHECK) | | 日期 (DATE) | |
| .XX ± 0.15 | .XX' ± -- | 料号 (PART NO.): 1220-XX120MGOX-11 | | Subdrawing | | Call Wang | | 图号 (DWG NO.): | |
| .XXX ± 0.10 | .XXX' ± -- | 比例 (SCALE): 1:1 | | 料号 (PART NO.): | | .study Wang | | 单位 (UNIT): MM | |
| | | 版本 (REV): A0 | | 料号 (PART NO.): | | 版次 (REV): | | 页次 (SHEET): 1 OF 1 | |



| | |
|------|---------|
| Type | 可定制尺寸 |
| H | 1.5/2.0 |
| PA | 4.0 |
| PB | 2.8 |
| PD | 8.0 |
| PC | 6.0 |

Specifications:
 Current Rating: 1.5 Amp
 Voltage Rating: 150V AC/DC
 Contact resistance: 20m Ohm Max
 Insulator resistance: 1000M Ohm min.
 Withstanding Voltage: 500V AC/Minute
 Operating Temperature Range: -40° ~+105° C
 Material And Finish
 Insulator: Polyester, (PBT U94V-0)
 Insulator Color: Black
 Contact: Brass
 Contact Plated: See Contact Plated Tab.

Ordering information



| Order Code | Ordering Code | Ordering Code | Ordering Code |
|--------------|---------------|---------------|---------------|
| 01 Lead 1.0" | 11 Lead 1.0" | 11 Lead 1.0" | 11 Lead 1.0" |
| 02 Lead 1.2" | 12 Lead 1.2" | 12 Lead 1.2" | 12 Lead 1.2" |
| 03 Lead 1.5" | 13 Lead 1.5" | 13 Lead 1.5" | 13 Lead 1.5" |
| 04 Lead 1.8" | 14 Lead 1.8" | 14 Lead 1.8" | 14 Lead 1.8" |
| 05 Lead 2.0" | 15 Lead 2.0" | 15 Lead 2.0" | 15 Lead 2.0" |
| 06 Lead 2.5" | 16 Lead 2.5" | 16 Lead 2.5" | 16 Lead 2.5" |
| 07 Lead 3.0" | 17 Lead 3.0" | 17 Lead 3.0" | 17 Lead 3.0" |

未注公差 UNLESS OTHERWISE SPECIFIED TOLERANCE

| | | | |
|-------------------------------|-------------|--------------------------|--|
| 线性 (LINER) | 角度 (ANGLES) | 品名 (TITLE): | |
| x ± 0.20 | x° ± 1' | PH2.0 2*NP SMT 双塑 无柱 系列图 | |
| .xx ± 0.15 | .xx° ± 1' | 绘图 (DRAWING) | |
| .xxx ± 0.10 | .xxx° ± 1' | 审核 (CHECK) | |
| 第三级角投影 THIRD ANGLE PROJECTION | | 批准 (APPROVED) | |
| | | 日期 (DATE) | |

Subdrawing 料号(PART NO.): 1220-XX220(GOX-31)

Call Wang 图号(DWG NO.):

·Study Wang 版本(SCALE) 1:1 单位(UNIT) MM

版次(REV.) AO 页次(SHEET) 10F1

A4